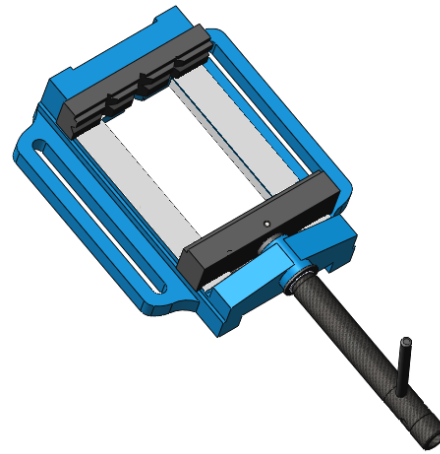
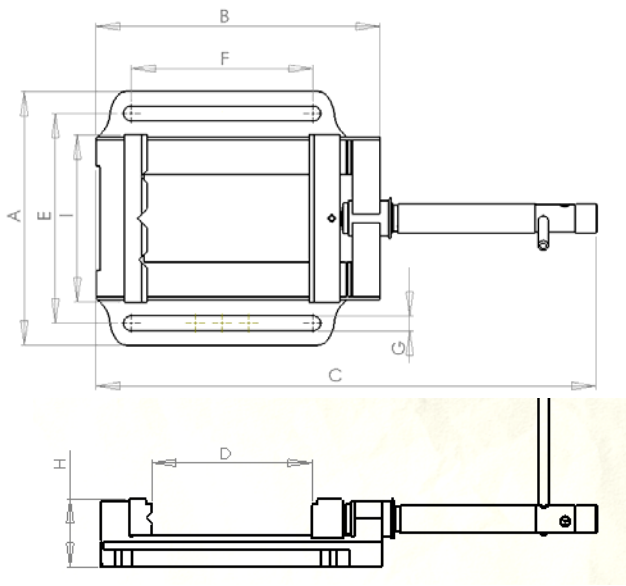


鋼牙虎鉗
STEEL JAW VISE



Feature:

- Suitable for clamping work piece on drill press machine & milling machine
- Designed with solid structure, main body is made of FC15, assemble a pair of heat treated steel jaws with hardness HRC 45°~50°
- Jaw pair and handle are surface treated by black oxide finish
- Front fixed prismatic jaw with cross V-grooves is designed for clamping work piece firmly in both vertical & horizontal directions.

Unit: mm

Order No.	A	B	C	D(min.)	E	F	G	H	I	Max. clamping force (ton)	weight
102-3	167	165	290	85	135	81	12	50	84	1.5	3.5
102-4	202	203	343	100	162	101	13	60	104	1.6	5.7
102-5	226	230	390	125	190	130	13	67	132	1.75	8.2
102-6	254	266	450	152	214	154	18	75	156	1.75	11.6